



23 South Mission Street
 Suite C
 Wenatchee, WA 98801

Tel: (509) 293-5566
 Fax: (509) 664-6817

December 13, 2011

Entiat School District No. 127
 2650 Entiat Way
 Entiat, WA 98822

Subject: #0941
 Potential Project Costs

Michael Wyant, Superintendent,

We have developed a preliminary cost estimate based on the revised program and sketches. These amounts are very rough estimates at this time, based on square footage costs and should be used for planning purposes only.

Assumptions made include:

- Moderate level of finishes, no high end materials
- Construction similar to existing
- Budget based on 2011 costs

Modernizations/ interior modifications

- | | | |
|-----------------------------|-----------------------------------|--------------------|
| • Modernize elementary wing | 22,000 sf @ \$200/sf | \$4,400,000 |
| | Taxes, fees and contingency (40%) | <u>\$1,760,000</u> |
| | | \$6,160,000 |

Potential State match for elementary wing modernization	<u>\$2,775,304</u>
Local funds	\$3,384,696

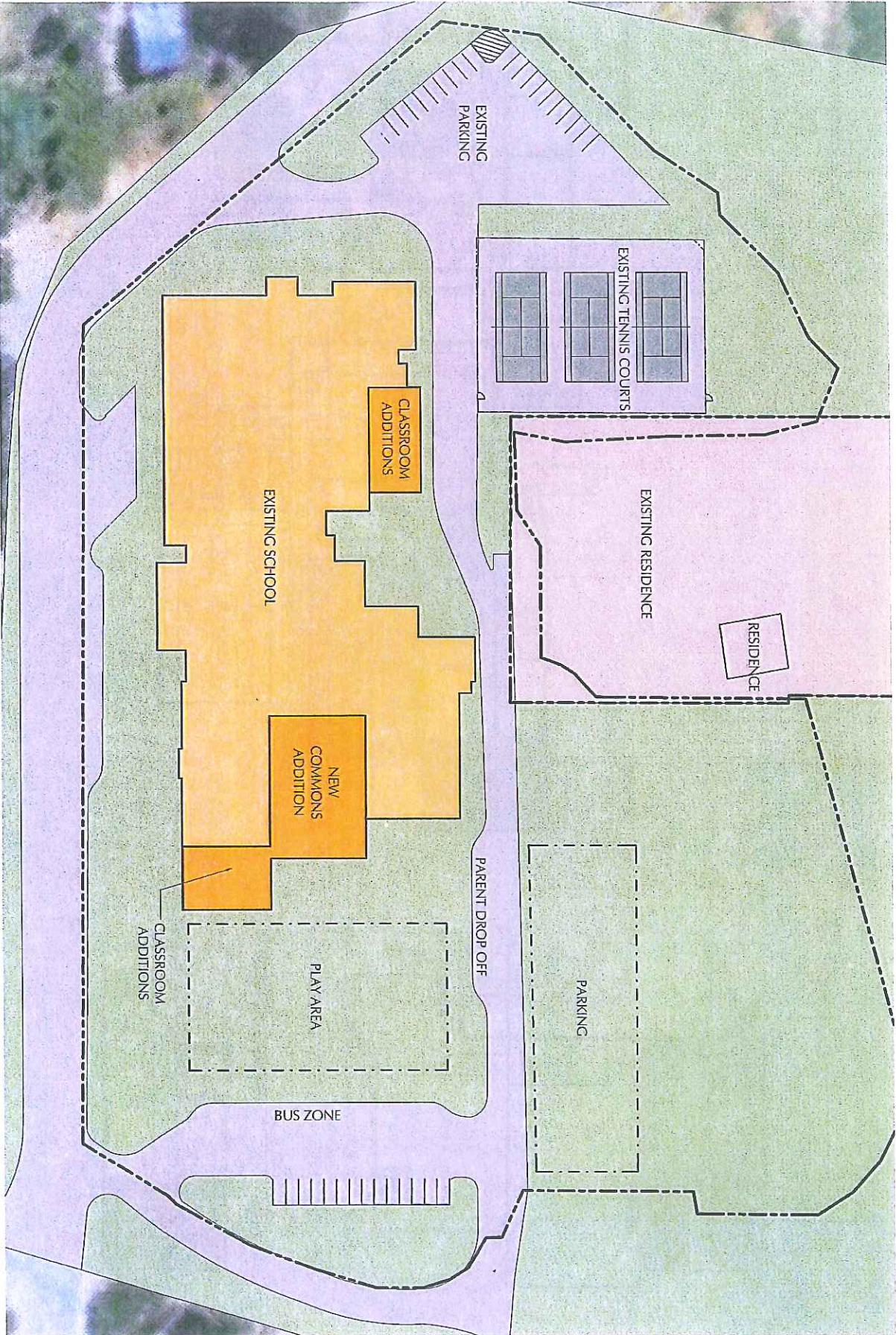
- | | | |
|------------------|-----------------------------------|------------------|
| • Student Center | 2,500 sf @ \$110/sf | \$275,000 |
| | Taxes, fees and contingency (40%) | <u>\$110,000</u> |
| | | \$385,000 |

New Construction

- | | | |
|----------------------------------|-----------------------------------|------------------|
| • Elementary classrooms | 4,000 sf @ \$260/sf | \$1,040,000 |
| | Taxes, fees and contingency (40%) | <u>\$416,000</u> |
| | | \$1,456,000 |
| • Commons | 6,600 sf @ \$240/sf | \$1,584,000 |
| | Taxes, fees and contingency (40%) | <u>\$633,600</u> |
| | | \$2,217,600 |
| • Middle School classrooms (two) | 2,400 sf @ \$250/sf | \$600,000 |
| | Taxes, fees and contingency (40%) | <u>\$240,000</u> |
| | | \$840,000 |

Site work	\$250,000
Taxes, fees and contingency (40%)	<u>\$100,000</u>
	\$350,000

*Cost estimates
 accompanying 12/13/11
 drawing*

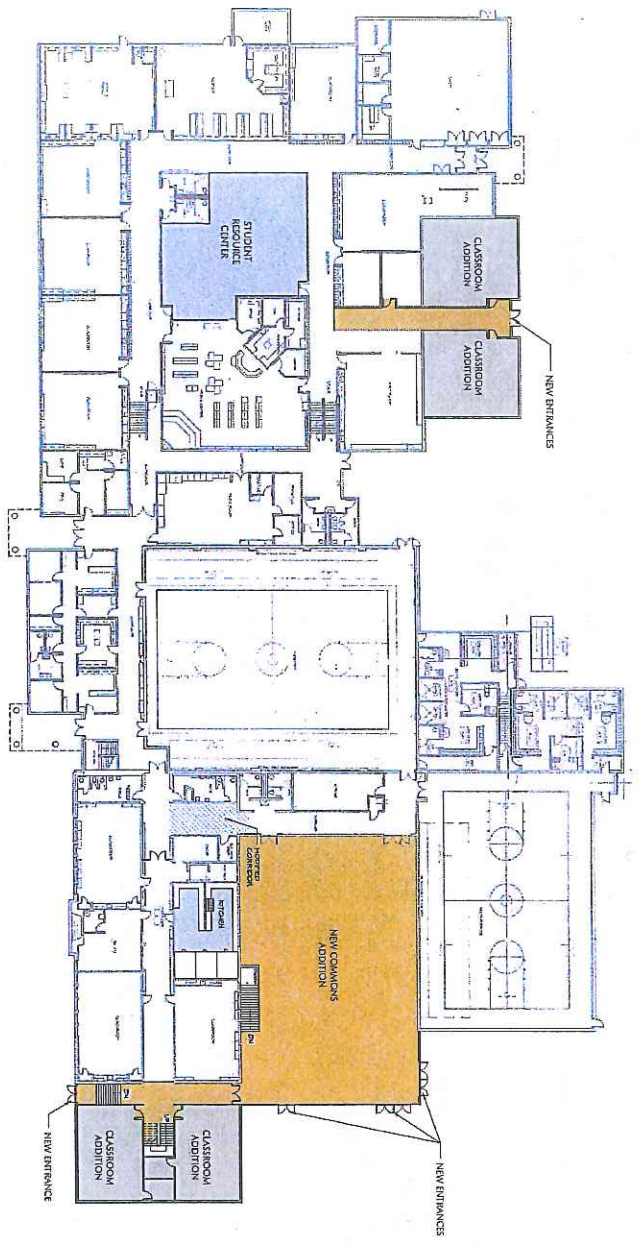


12/13/11

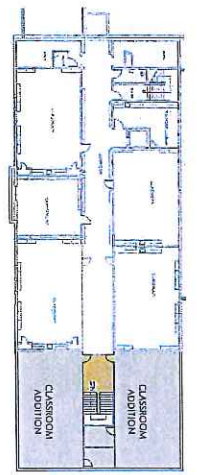
12/13/11

12/13/11

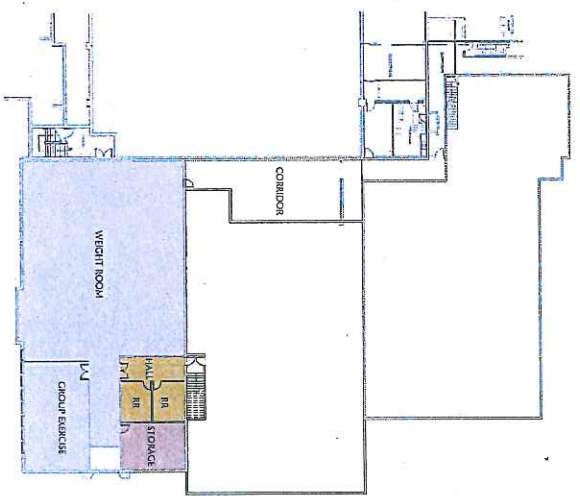
12/13/11



1 MAIN FLOOR PLAN



2 SECOND FLOOR PLAN



3 BASEMENT PLAN

FORTE
ARCHITECTS
 12132011
 ENTIAT, WASHINGTON
 09711
 ENTIAT SCHOOL DISTRICT #127

12/13/11

1st requested drawing
 showing commons
 between flux gym +
 elementary
 12/13/11