

ENTIAT SCHOOL DISTRICT

2650 Entiat Way - Entiat, Washington 98822 – Telephone (509) 784-1800 – Fax (509) 784-2986
www.entiatchools.org

Introduction: In 2009 the Entiat School District Facilities Study Committee conducted a study and survey of the district's facilities. Many needs were identified during the study. The highest priorities from the study are listed below. The architectural firm that assisted the district with the study and survey assigned approximate costs to these projects and provided the attached drawings.

Remodel/modernize, add to, and reconfigure the elementary wing

- Replace or repair mechanical (heating, ventilation, air conditioning, lighting, sewer, etc.)
 - Remodel/modernize elementary classrooms, halls, bathrooms, entry points, etc.
 - Move kindergarten and preschool classrooms out of the basement
 - Add new construction (six classrooms, 6,500 square feet on two floors at north end of building, eliminating the need for the existing portable building)
 - Relocate the kitchen and cafeteria to new construction (see next item)
 - Remodel the basement into a weight/fitness room for student and community use and additional storage space
- Estimated cost of remodel and new construction: \$3,031,000 + 40% taxes, fees and contingency (total cost = \$4,243,400)
- Estimated cost of remodel only: \$1,406,000 + 40% taxes, fees and contingency (total cost = \$1,968,400)
- The district is potentially eligible for \$1,050,000 state match to modernize the elementary.

Add new commons/cafeteria/stage and kitchen facility

- 9,600 square foot addition on the west side of the school adjacent to the main gym and the small gym
 - Large capacity (250 – 300 person) space for community use
 - Entry for events in the gymnasiums
 - Concessions area for events
 - Stage for school and community performances and presentations
 - Remove existing boys and girls locker rooms
- Estimated cost: \$2,112,000 + 40% taxes, fees and contingency (total cost = \$2,956,800)

Add four classrooms to the middle/high school wing

- New classrooms (4,500 square feet) added to the west side of the middle/high school wing adjacent to and south of the new commons/cafeteria
 - Give the middle school a more distinct and separate identification and location
 - Provide space to remodel existing middle/high school rooms into a high school student center
- Estimated cost: \$1,125,000 + 40% taxes, fees and contingency (total cost = \$1,575,000)

Add new locker rooms

- Two stories, four locker rooms (6,000 square feet)
 - Located in the courtyard area at the north end of the school between the small gym and the elementary)
 - Physical education locker rooms on top floor
 - Athletic locker rooms on bottom floor with access to the weight/fitness room
- Estimated cost: \$1,740,000 + 40% taxes, fees and contingency (total cost = \$2,436,000)

Remodel existing space in the high school into a high school student center

- Provide location for high school students to gather
 - Provide space for student computer access, counselor access, etc.
- Estimated cost: \$250,000 + 40% taxes, fees and contingency (total cost = \$350,000)

Miscellaneous site work

- Parking lot work, landscaping, site preparation, etc.
- Estimated cost: \$250,000 + 40% taxes, fees and contingency (total cost = \$350,000)

Total estimated cost of all projects listed, including taxes, fees and contingency: \$11,911,200

Construction Funding

District taxpayers are presently paying for construction bonds that were issued in the mid-1990s. These bonds will be completely paid off at the end of 2013. The projected cost to the taxpayer for the existing bonds is \$1.21 per \$1,000 of assessed property value in 2011 down to \$1.09 per \$1,000 in 2013.

At the projected \$11,911,200 cost of the construction priorities that were identified in the facilities study and survey, taxpayers would be asked to pay 3.19 per \$1,000 of assessed property value beginning in 2014 and ending in 2034. This would be an increase of \$2.09 per \$1,000 over the amount that taxpayers are paying for the present bond.

Timeline

The school board is ultimately responsible to determine if and when a bond election is held. The board has discussed the following timeline as one possibility:

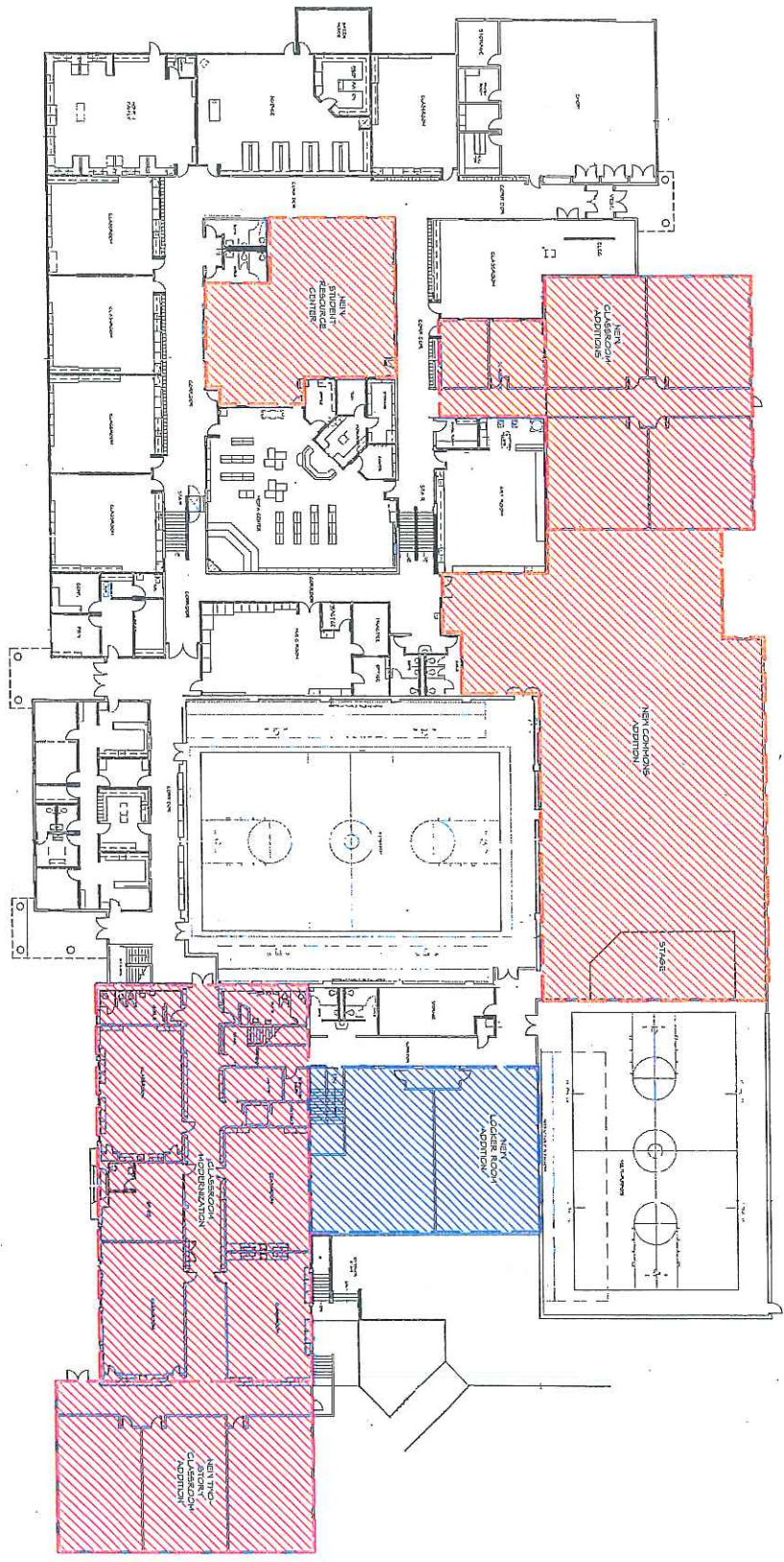
- | | |
|---------------------------------|--|
| February, 2011 – December, 2011 | Gather community comment |
| January, 2012 – September, 2012 | Weigh information, determine project scope and bond size |
| November, 2012 | Authorize bond election |
| February, 2013 | Hold bond election |

In this timeline construction would begin sometime in the beginning to the middle of 2014.



ENTIAT, WASHINGTON
000000
0000

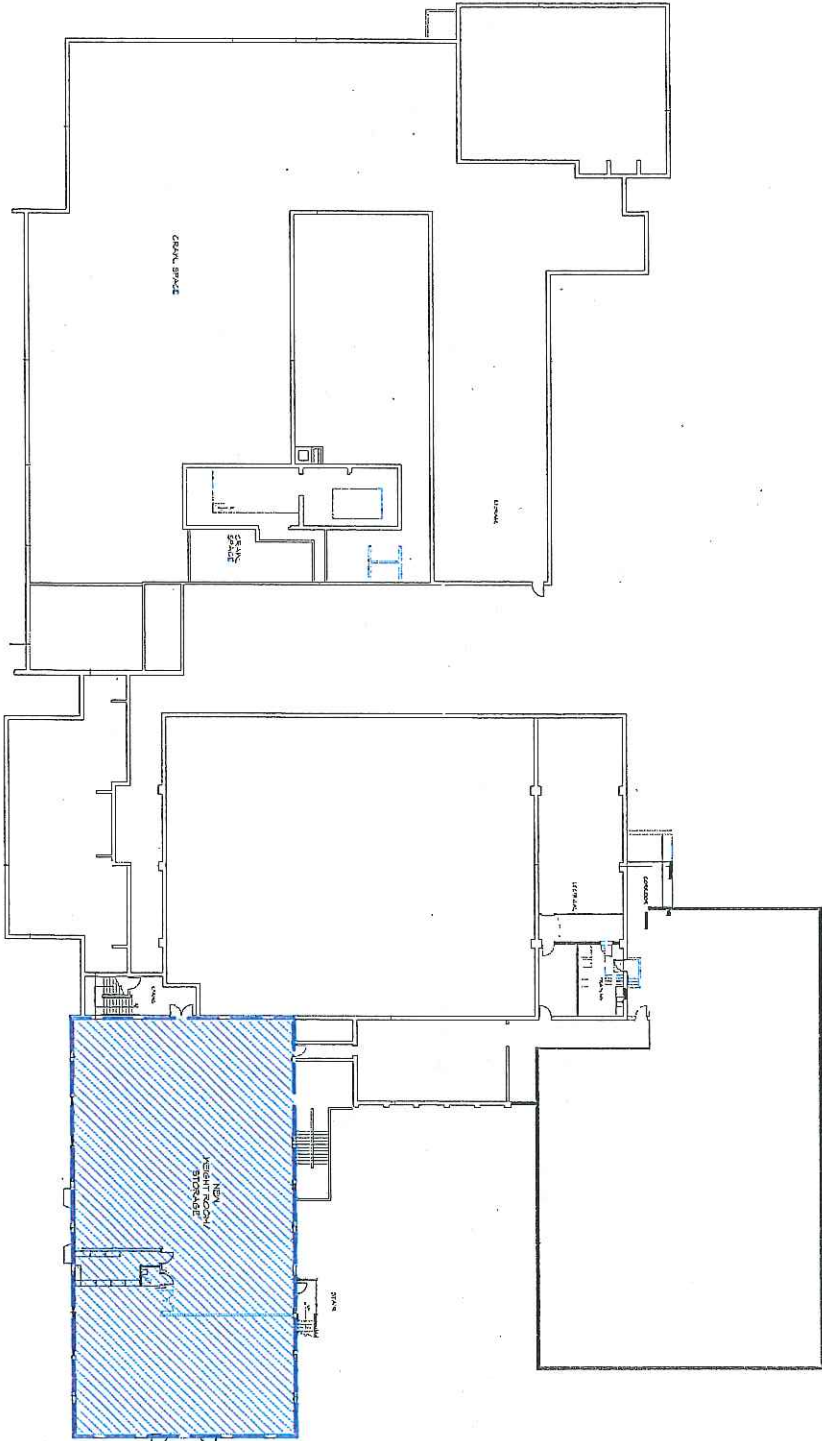
ENTIAT SCHOOL DISTRICT



① MAIN FLOOR IMPROVEMENT AREA PLAN



ENTIAT, WASHINGTON
ENTIAT SCHOOL DISTRICT
09/11



1 PROPOSED BASEMENT IMPROVEMENT AREA PLAN