

**Mike Wyant**

*12/13/11 meeting minutes*

**From:** Mike Wyant  
**Sent:** Monday, December 19, 2011 1:32 PM  
**To:** Diane Grover; Jim Smothers; Jimmy Brooks; John Barnes; Julie Zielke; Keith Vradenburg; Leonardo Quezada; Lori Anderson; Mike Wyant; Miles Caples; Randy Whitehall (rwhitehall@fs.fed.us); Rick Long; Tammi Giacomazzi; Tom Bassett  
**Subject:** Meeting Minutes, 1/17/12 meeting scheduled  
**Attachments:** facility draft 121311.pdf; facilities cost estimate 121311\_0001.pdf

The facilities study committee met on Tuesday, December 13, 2011 at 5:00 p.m. in the school district library.

Those attending were: Lori Anderson, John Barnes, Tom Bassett, Jim Brooks, Miles Caples, Tammy Giacomazzi, Diane Grover, Jose Quezada, Mike Wyant, Julie Zielke.

At the November meeting the committee asked Tom Bassett (Forte Architects) to develop a drawing that placed a commons in the space between the blue gym and the existing elementary. This would leave the existing locker rooms intact.

Tom shared with the committee the drawings of the building plan and the site plan that he had prepared. The drawings can be viewed in the attached pdf. Tom included the additional middle school classrooms and a student resource center in the drawings because they have been in all of the previous drawings. Tom also shared a document with cost estimates (attached pdf) for various elements of the plan that the committee has been discussing. Questions, discussion and sharing of ideas followed.

The meeting ended with those committee members who were in attendance concluding that we are closing in on a workable design that is within a reasonable cost. The design includes:

- Modernizing and adding on to the elementary wing (eliminating the need for the portable building)
- Adding a commons between the blue gym and the elementary
- Site work that includes new parking and playground areas.

The total estimated cost for this proposal is about \$10,175,000, including taxes, fees and contingency. In this scenario voters would be asked to fund a little less than \$7,500,000 for the project. The potential state match for modernizing the elementary is \$2,775,304. The estimated cost to tax payers to raise \$7,500,000 is \$2.50 / \$1,000 of assessed property value.

The committee asked Tom to present more detailed drawings for the January meeting. That meeting is scheduled for Tuesday, January 17, 2012 at 4:30 p.m. in the school district library. The start time for the meeting was moved up to 4:30 because there is a home basketball game that evening.

The school board will be updated on the planning work to date at the January 19 board meeting.

Thank you for continuing to contribute your time and energy to this planning process. I hope to see you at 4:30 on January 17.

Mike

Michael Wyant  
Superintendent  
Entiat School District  
2650 Entiat Way  
Entiat, WA 98822



23 South Mission Street  
 Suite C  
 Wenatchee, WA 98801

Tel: (509) 293-5566  
 Fax: (509) 664-6817

December 13, 2011

**Entiat School District No. 127**  
 2650 Entiat Way  
 Entiat, WA 98822

**Subject: #0941**  
 Potential Project Costs

Michael Wyant, Superintendent,

We have developed a preliminary cost estimate based on the revised program and sketches. These amounts are very rough estimates at this time, based on square footage costs and should be used for planning purposes only.

Assumptions made include:

- Moderate level of finishes, no high end materials
- Construction similar to existing
- Budget based on 2011 costs

Modernizations/ interior modifications

• Modernize elementary wing	22,000 sf @ \$200/sf	\$4,400,000
Taxes, fees and contingency (40%)		<u>\$1,760,000</u>
		\$6,160,000

Potential State match for elementary wing modernization	<u>\$2,775,304</u>
Local funds	\$3,384,696

• Student Center	2,500 sf @ \$110/sf	\$275,000
Taxes, fees and contingency (40%)		<u>\$110,000</u>
		\$385,000

New Construction

• Elementary classrooms	4,000 sf @ \$260/sf	\$1,040,000
Taxes, fees and contingency (40%)		<u>\$416,000</u>
		\$1,456,000

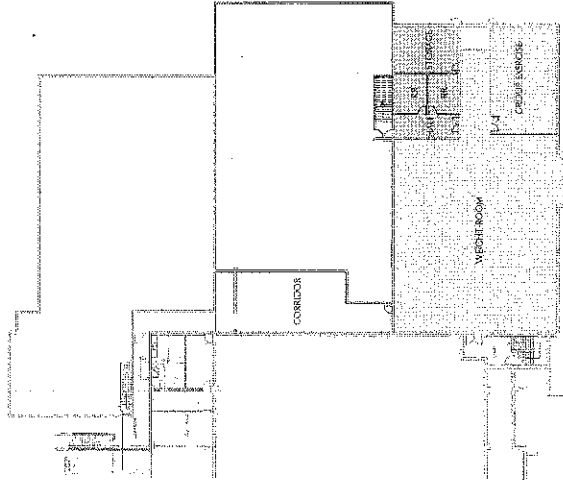
• Commons	6,600 sf @ \$240/sf	\$1,584,000
Taxes, fees and contingency (40%)		<u>\$633,600</u>
		\$2,217,600

• Middle School classrooms (two)	2,400 sf @ \$250/sf	\$600,000
Taxes, fees and contingency (40%)		<u>\$240,000</u>
		\$840,000

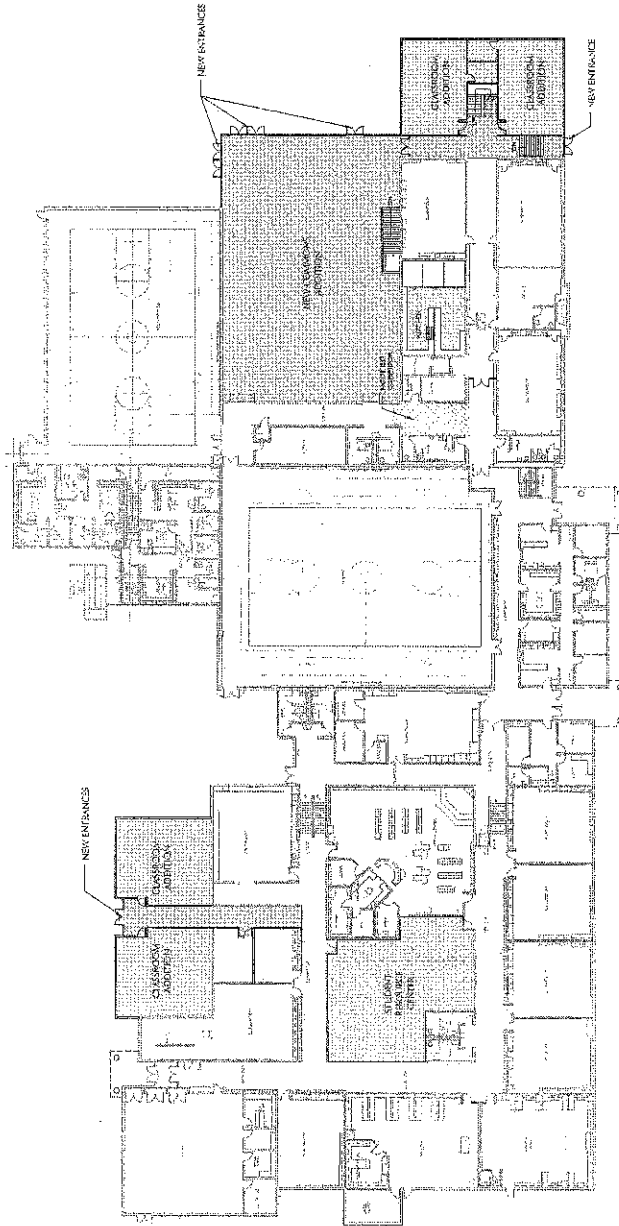
Site work	\$250,000
Taxes, fees and contingency (40%)	<u>\$100,000</u>
	\$350,000



2 SECOND FLOOR PLAN



3 BASEMENT PLAN

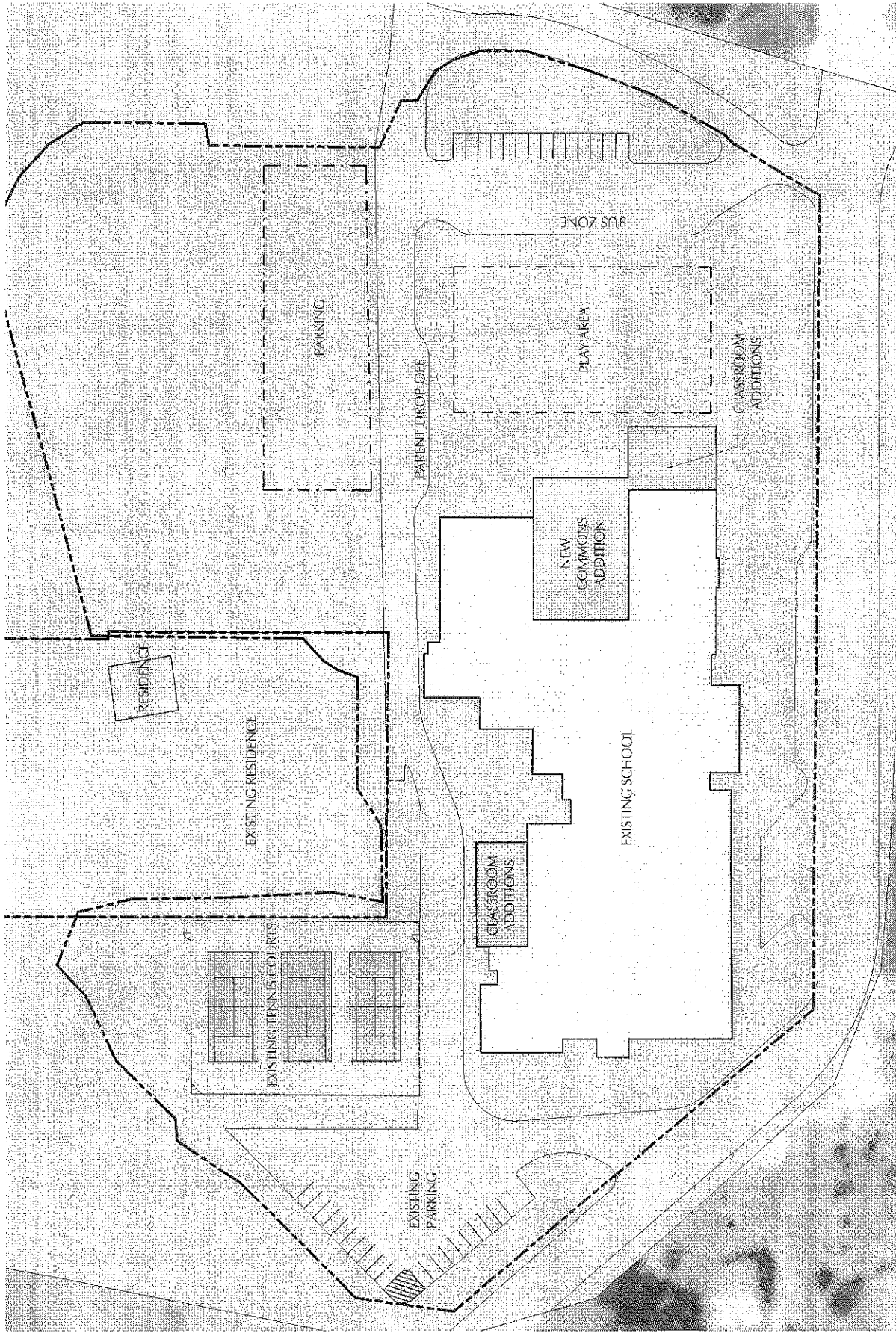


1 MAIN FLOOR PLAN

ENTIAT SCHOOL DISTRICT #127



ENTIAT, WASHINGTON  
 ARCHITECTS  
 12410 12TH AVENUE, S.E.  
 TACOMA, WA 98148



1 SITE PLAN

ENTIAI, WASHINGTON  
0411

